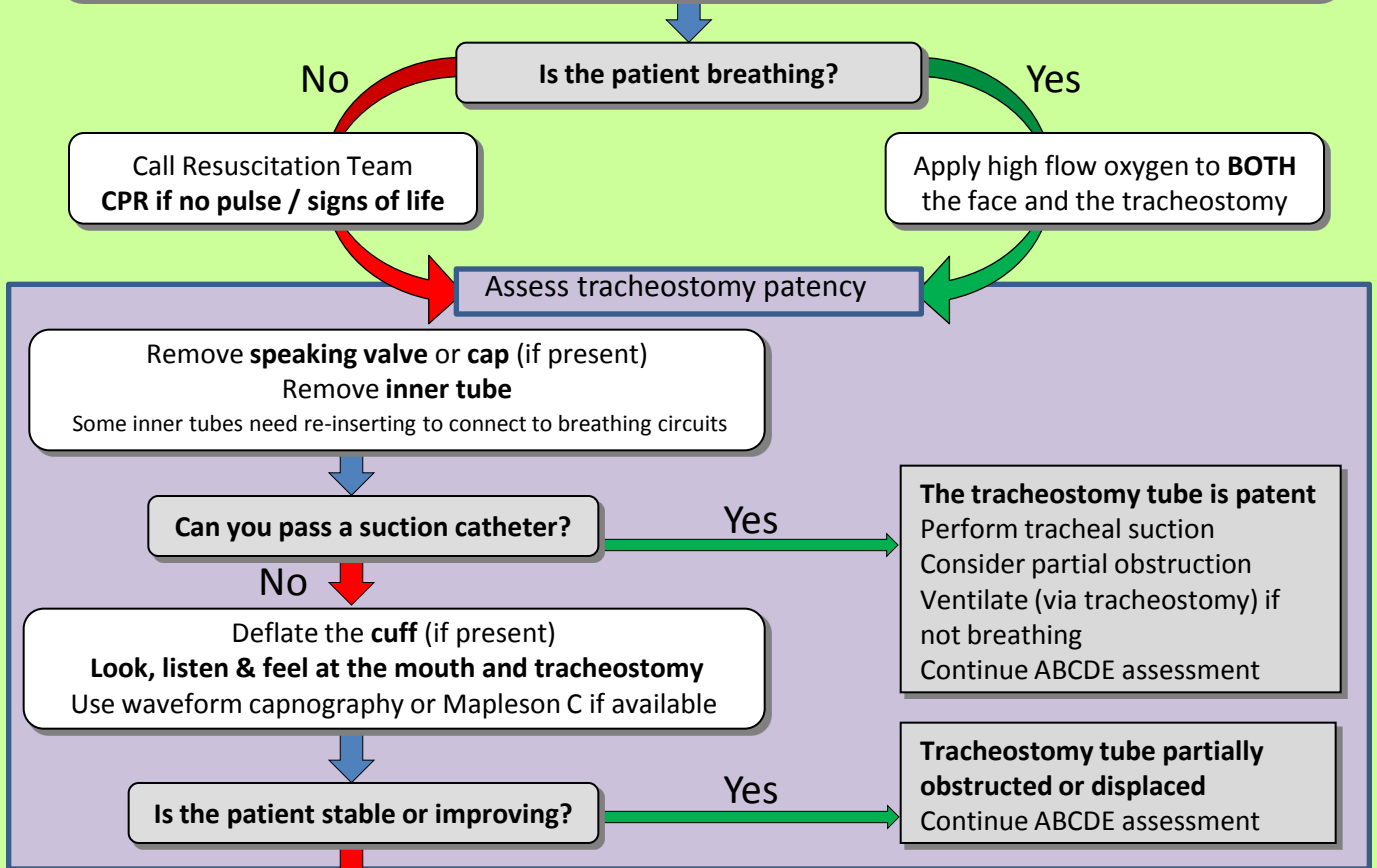
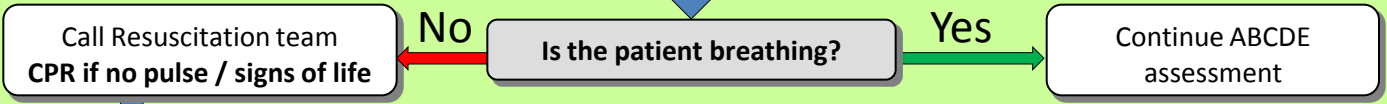


Emergency tracheostomy management - Patent upper airway

Call for airway expert help
Look, listen & feel at the mouth and tracheostomy
 A Mapleson C system (e.g. 'Waters circuit') may help assessment if available
 Use **waveform capnography** when available: exhaled carbon dioxide indicates a patent or partially patent airway



REMOVE THE TRACHEOSTOMY TUBE
Look, listen & feel at the mouth and tracheostomy. Ensure oxygen re-applied to face and stoma
 Use waveform capnography or Mapleson C if available



Primary emergency oxygenation

- Standard **ORAL** airway manoeuvres
- Cover the stoma (swabs / hand). Use:
 - Bag-valve-mask
 - Oral or nasal airway adjuncts
 - Supraglottic airway device e.g. LMA
- Tracheostomy STOMA** ventilation
 - Paediatric face mask applied to stoma
 - LMA applied to stoma

Secondary emergency oxygenation

- Attempt **ORAL** intubation
- Prepare for difficult intubation**
- Uncut tube, advanced beyond stoma
- Attempt **intubation of STOMA**
- Small tracheostomy tube / 6.0 cuffed ETT
- Consider Aintree catheter and fiberoptic 'scope / Bougie / Airway exchange catheter